

The P2 Results Data System

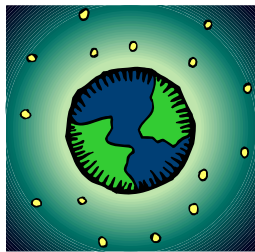
Demonstrating the Value of Pollution Prevention

What is the P2 Results Data System?

Recently, funding was awarded to roll out regional P2 results measurement modules to each Pollution Prevention Resource Exchange (P2Rx) regional center from the National Environmental Information Exchange Network (NEIEN). These modules are part of a national P2 results measurement effort called the P2 Results Data System. Each regional center's module will allow organizations and agencies within that region to enter data from pollution prevention programs. The regional modules will feed into the national database, and aggregated data at the national level will be reported to the U.S. Environmental Protection Agency (EPA). This information will be used to demonstrate the value of publicly supported Pollution Prevention (P2) programs and will assist policymakers, government agencies, and P2 programs in setting priorities, goals, and plans for improvement. The Great Lakes Regional Pollution Prevention Roundtable (GLRPPR) is developing a system that will be of the most benefit to participants in our area.

This effort was designed to collect available data on waste reduction and resource efficiency efforts from public agencies. The [National P2 Measurement Results Task Force](#), comprised of representatives from State P2 programs, U.S. EPA Headquarters and Regions, P2 Resource Exchange Centers (P2Rx), and the National Pollution Prevention Roundtable (NPPR), contributed greatly to the process by developing a core set of P2 measures—the Data Dictionary—that is the foundation for this project. The Task Force also identified and addressed barriers and opportunities for P2 results measurement. State representatives on this regional task force will be asked to represent their state and agency in sharing opinions and existing activities within their state. They will also help coordinate opinions, collect data, and share regional and national measurement activity information with organizations and representatives within their state.

What are the benefits of participating in this initiative?



The data will help demonstrate the activities of agencies, as well as the positive changes of their clients as a result of their activities. In addition, the data will help quantify P2 progress related to air, water, waste, and energy resources. It is hoped that in the future, this model will be able to translate P2 progress into the context of bigger-picture issues such as climate change, habitat, and sustainability.

Also note that many U.S. EPA grantees are currently obligated to enter measurement data into this system. The U.S. EPA is under increasing pressure to show demonstrable results from programs that it funds, and the estimation of outcome results or the reporting of such results is likely to be emphasized in future RFPs from U.S. EPA.

The plan is to add additional regional measures of interest to the system later. GLRPPR also has added a feedback form to the Web site for suggested modifications to the module.

I'm not sure my work produces the numbers you're looking for. What kinds of data can be entered?

The measures sought basically divide into three types:

- Activity measures from agencies (such as trainings conducted)
- Behavioral results (such as clients reporting compliance improvements)
- Outcome measures (such as Hazardous Waste reduced)

Participants do not have to enter something in every field on the forms. Only enter what the your agency has or what applies to you. An aggregated report for the entire region that includes all data submitted from all agencies is available to all viewers. This information can give managers, funders, and the public a better sense of the benefits of pollution prevention. Registered users have a user name and password that allows them to input data and view a report that summarizes all the data from their agency.

Can I look at the input forms for the database before signing up for an account so I can gauge how applicable my information is to the project?

Yes. A “test” module is available on the P2Rx Web site at <http://www.p2rx.org/measurement/index.cfm>. Use “region5test1” as both the user name and password. If you want to enter real data to include in the measurement initiative, you must contact Tyler Rubach for an account to use with the module available on the GLRPPR Web site at <http://www.glrppr.org/measurement/>.

My organization/program already has a system for tracking results. Can we transfer data from it to the P2 Results Data System?

Not at this time. The technical issues in transferring such data are still being worked on, and that should be available in the future.

How do I enter data?

To become an active participant, you need to contact Tyler Rubach at trubach@wmrc.uiuc.edu or call 217-244-6553.

